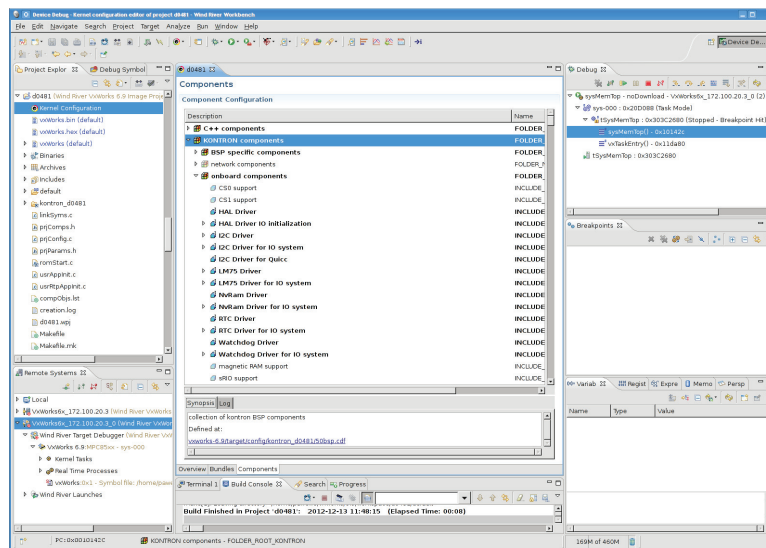


# » Kontron D0481 Platform BSP for Wind River VxWorks «



**WIND RIVER  
PARTNER**

## Kontron D0481 Platform BSP for Wind River VxWorks

- » Off-the-shelf BSP for Wind River VxWorks
- » Fully integrated into the Wind River Workbench
- » Supports platform board specific devices
- » Supports Kontron COMe-cP2020

## Kontron D0481 Platform BSP for Wind River VxWorks

The Kontron BSPs for Wind River platforms are designed to get customers started immediately with application development instead of first getting involved with BSP integration or hardware bring-up issues. Support of board specific devices and interfaces has been added to the BSP to achieve the full benefit of the functions provided by the hardware.

The BSP is prepared to use the Wind River system diagnostic and debugging tools which are integral elements of the Wind River Workbench.

### Technical Information

<b>Wind River VxWorks platform</b>	Platform for Industrial Devices (VxWorks 6.9) (Other platforms can be supported, please contact Kontron)
<b>Processor / CPU</b>	Freescale QorIQ P2020, P2010
<b>Multi Processing</b>	Symmetric (SMP)
<b>Boot Devices</b>	Network
<b>PCI Express</b>	Root Complex
<b>Serial RapidIO</b>	sRIO Host and Agent Basic Hardware Abstraction Layer (HAL) API and Demo Application in source code
<b>Ethernet</b>	10/100/1000 BASE-T Enhanced TSECs
<b>Serial</b>	RS232 with hardware handshake RS232 without hardware handshake
<b>Timer</b>	System, Auxiliary, Timestamp
<b>Miscellaneous Devices</b>	Real Time Clock Hardware Watchdog (RESET, IRQ, TIMER, Dual-Stage) EEPROM for boot line storage EEPROM for user data storage
<b>Mass Storage</b>	SDHC, USB memory stick

NOTE: The feature list above represents a summary of functionalities supported by the Platform BSP. Depending on the used platform Board a subset of those features is available. For more information about implemented hardware features refer to the platform Board Hardware Manual.

### Ordering Information

Article	Part No.	Description
---------	----------	-------------

Please contact your local sales office for ordering information.

### CORPORATE OFFICES

#### Europe, Middle East & Africa

Lise-Meitner-Str. 3-5  
86156 Augsburg  
Germany

Tel.: +49 (0) 821 4086-0  
Fax: +49 (0) 821 4086 111  
sales@kontron.com

#### North America

14118 Stowe Drive  
Poway, CA 92064-7147  
USA

Tel.: +1 888 294 4558  
Fax: +1 858 677 0898  
info@us.kontron.com

#### Asia Pacific

17 Building,Block #1, ABP.  
188 Southern West 4th Ring Road  
Beijing 100070, P.R.China

Tel.: +86 10 63751188  
Fax: +86 10 83682438  
info@kontron.cn