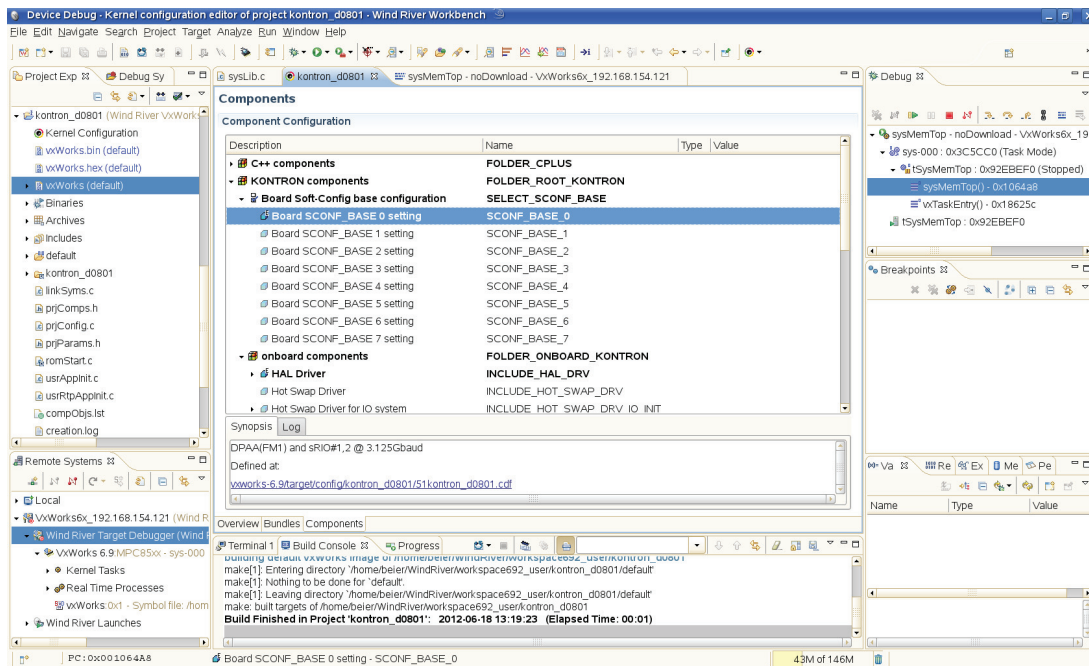


» Kontron D0801 Platform BSP for Wind River VxWorks «



**WIND RIVER
PARTNER**

Kontron D0801 Platform BSP for Wind River VxWorks

- » Off-the-shelf BSP for Wind River VxWorks
- » Fully integrated into the Wind River Workbench
- » Supports platform board specific devices
- » Supports Kontron AM4140

Kontron D0801 Platform BSP for Wind River VxWorks

The Kontron BSPs for Wind River platforms are designed to get customers started immediately with application development instead of first getting involved with BSP integration or hardware bring-up issues. Support of board specific devices and interfaces has been added to the BSP to achieve the full benefit of the functions provided by the hardware.

The BSP is prepared to use the Wind River system diagnostic and debugging tools which are integral elements of the Wind River Workbench.

The BSP includes an evaluation mode version of the Datalight FlashFX® Pro middleware, which acts basically as

a software based NAND Flash manager. Datalight FlashFX Pro makes NAND Flash memory appear as a standard high-performance disk drive to the operating system.

Applications can use standard disk drive access methods to read and write NAND Flash memory, with no modifications as Datalight FlashFX Pro provides a generic block device driver interface that can be used by Wind River / VxWorks file systems, like DOSFS or HRF5. Datalight FlashFX Pro does not provide a file system of its own. Please contact Wind River for a full license for Datalight FlashFX Pro.

Technical Information

Wind River VxWorks Platform	Platform for Industrial Devices (VxWorks 6.9.2) (Other platforms can be supported, please contact Kontron)
Processor / CPU	Freescale® QorIQ P4080
Multi Processing	Symmetric (SMP)
Boot Devices	Network NAND Flash SD Card
PCI Express	Root Complex
Serial RapidIO	Host/Agent (HAL Library and application demo)
Ethernet	10/100/1000 BASE-T DPAA TSECS 10 Gigabit Ethernet / XAUI
Serial	RS232 without hardware handshake
IPMI	Sensor Reading System Monitoring Graceful Shutdown
Timer	System, Auxiliary, Timestamp
Miscellaneous Devices	Real Time Clock Hardware Watchdog (RESET, IRQ, TIMER, Dual-Stage) EEPROM for boot line storage EEPROM for user data storage
Mass Storage	NAND Flash, micro SD Card
Board Status Indication	General purpose LED block

NOTE: The feature list above represents a summary of functionalities supported by the platform BSP. Depending on the used Platform Board a subset of those features is available. For more information about implemented hardware features refer to the Platform Board Hardware Manual.

Ordering Information

Please contact your local sales office for ordering information.

CORPORATE OFFICES

Europe, Middle East & Africa

Oskar-von-Miller-Str. 1
85386 Eching/Munich
Germany
Tel.: +49 (0)8165/ 77 777
Fax: +49 (0)8165/ 77 279
info@kontron.com

North America

14118 Stowe Drive
Poway, CA 92064-7147
USA
Tel.: +1 888 294 4558
Fax: +1 858 677 0898
info@us.kontron.com

Asia Pacific

17 Building,Block #1,ABP.
188 Southern West 4th Ring Road
Beijing 100070, P.R.China
Tel.: + 86 10 63751188
Fax: + 86 10 83682438
info@kontron.cn

