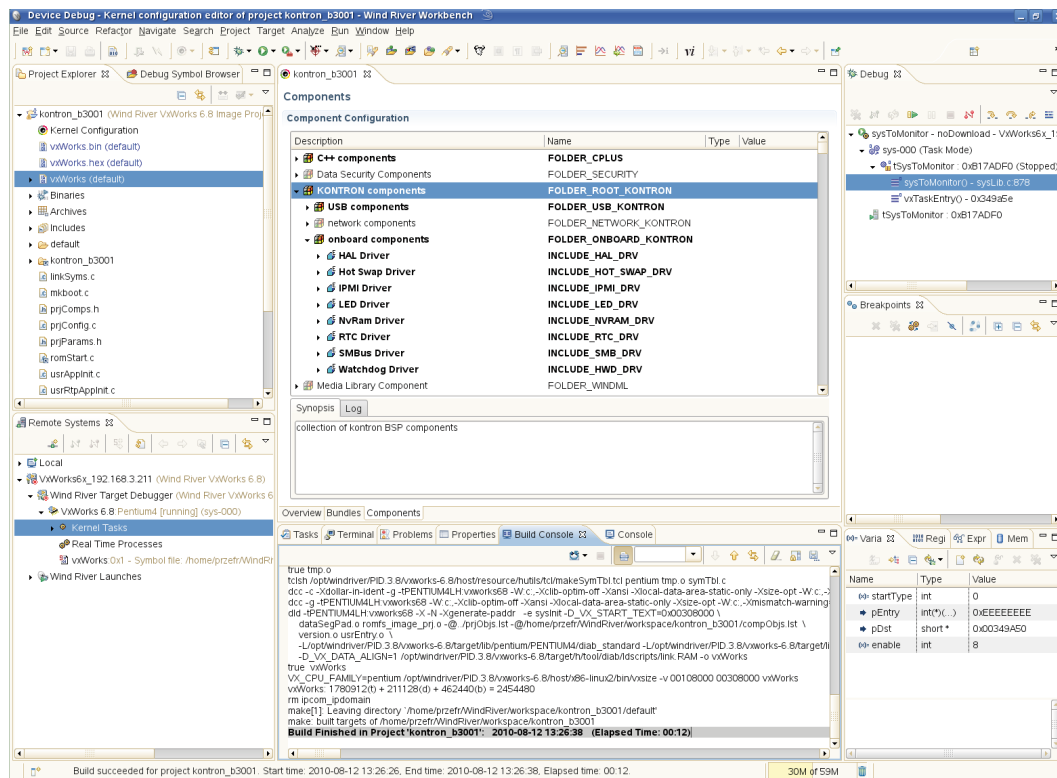


» B3001 Platform BSP for Wind River VxWorks «



B3001 Platform BSP for Wind River VxWorks

- » Off-the-shelf BSP for Wind River VxWorks
- » Fully integrated into the Wind River Workbench
- » Supports platform board specific devices
- » Supports AM5020, AM4020, CP6002, CP3002, CP3002-RC

B3001 Platform BSP

for Wind River VxWorks

The Kontron BSPs for Wind River platforms are designed to get customers started immediately with application development instead of first getting involved with BSP integration or hardware bring-up issues. Support of board specific devices and interfaces has been added to the BSP to achieve the full benefit of the functions provided by the hardware.

The BSP is prepared to use the Wind River system diagnostic and debugging tools which are integral elements of the Wind River Workbench.

Technical Information

Wind River VxWorks Platform	Platform for Industrial Devices (VxWorks 6.7/6.8) (Other platforms can be supported, please contact Kontron)
Multi Processing	Symmetric (SMP)
Boot Devices	Network MM-SATA module SATA Hard Disk USB Memory Stick Compact Flash
PCI Express	Root Complex
Ethernet	10/100/1000 BASE-T Gigabit Ethernet Interface
Serial	RS232 with hardware handshake
IPMI	Sensor Reading System Monitoring Graceful Shutdown
USB	Wind River USB 2.x Host Stack USB keyboards for VxWorks images and the VxWorks bootrom
Timer	System, Auxiliary, Timestamp
Miscellaneous Devices	Real Time Clock Hardware Watchdog (RESET, IRQ, TIMER, Dual-Stage) EEPROM for boot line storage EEPROM for user data storage
Mass Storage	MM-SATA SATA Hard Disk
Status Indication	General purpose LED block

NOTE: The feature list above represents a summary of functionalities supported by the platform BSP. Depending on the used Platform Board a subset of those features is available. For more information about implemented hardware features refer to the Platform Board Hardware Manual.

Ordering Information

Please contact your local sales office for ordering information.

CORPORATE OFFICES

Europe, Middle East & Africa

Oskar-von-Miller-Str. 1
85386 Eching/Munich
Germany
Tel.: +49 (0)8165/ 77 777
Fax: +49 (0)8165/ 77 219
info@kontron.com

North America

14118 Stowe Drive
Poway, CA 92064-7147
USA
Tel.: +1 888 294 4558
Fax: +1 858 677 0898
info@us.kontron.com

Asia Pacific

17 Building, Block #1, ABP.
188 Southern West 4th Ring Road
Beijing 100070, P.R.China
Tel.: + 86 10 63751188
Fax: + 86 10 83682438
info@kontron.cn

