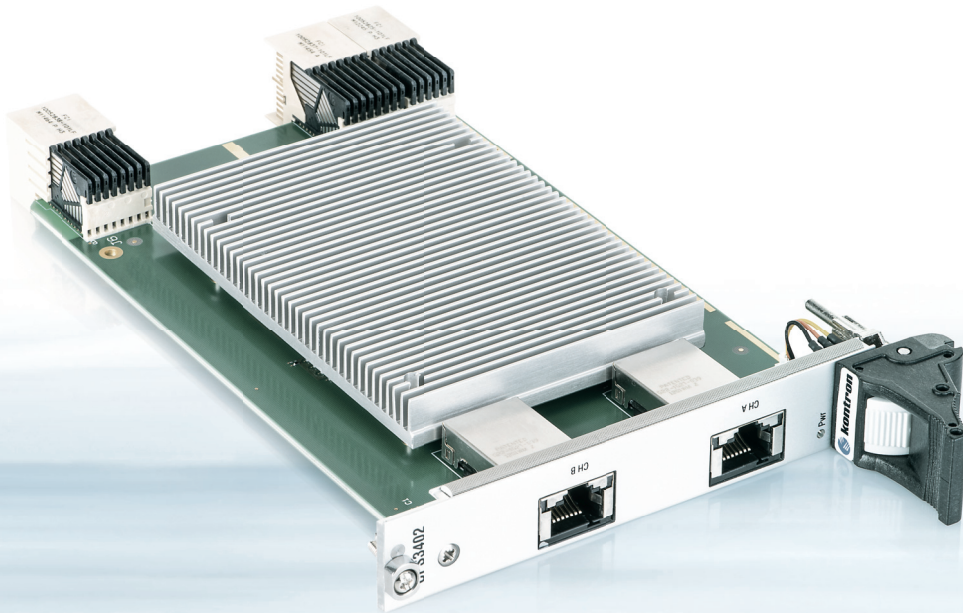


CPS3402



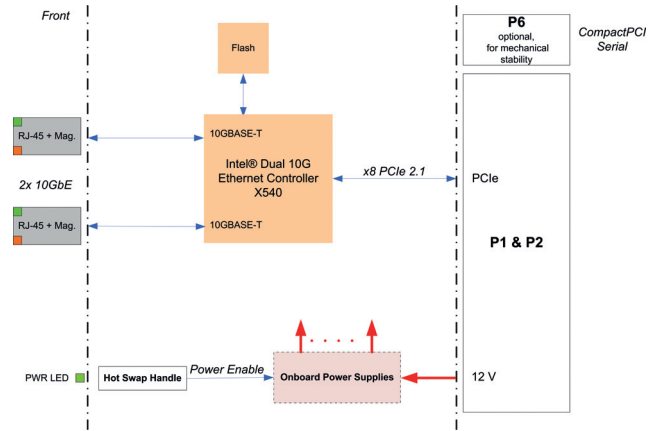
3U CPCI-S.0 DUAL 10GBASE-T ETHERNET CONTROLLER

- ▶ latest ethernet technology
- ▶ outstanding performance
- ▶ rugged design

CPS3402

3U CPCI-S.0 DUAL 10GBASE-T ETHERNET CONTROLLER

The CPS3402 is a 3U CompactPCI® Serial board providing two independent copper 10 Gigabit Ethernet interfaces via RJ-45 connectors. The board gives bandwidth-intensive applications a cost effective solution to integrate latest 10GbE network performance. The CPS3402 is equipped with the Intel® X540 controller which is manufactured as single-chip solution with integrated MAC controller and two 10GBASE-T PHYs. For a smooth transition and easy migration to 10GbE, the Ethernet controller provides the ability to auto-negotiate between 100 Mb/s, 1 Gb/s, and 10 Gb/s speeds. The CPS3402 connects to CAT 7 cabling.



TECHNICAL INFORMATION

FRONT INTERFACES	ETHERNET LED HOT SWAP HANDLE	Two 10 Gigabit Ethernet RJ-45 with integrated magnetics and LEDs (ACT, SPEED) Pwr (Power): Power Status of the CPS3402 If the HS handle is pressed, the onboard power supplies will be shut down and the board can be safely removed from the CPCI-S.0 system
ONBOARD INTERFACES	ETHERNET CONTROLLER	- Dual-channel 10 Gigabit Ethernet Controller, Intel® X540 - 10GBASE-T, 1000BASE-T and 100BASE-TX link modes
COMPACTPCI SERIAL INTERFACE	CPCI-S.0 INTERFACE	- P1 and P2 CPCI-S.0 connectors supporting one x8 PCI Express® 2.1 interface - Option to assemble the P6 connector for increased mechanical stability
COMPLIANCY		- CompactPCI® Serial Specification PICMG® CPCI-S.0 R1.0 - Safety: compliant to IEC60950-1, EN60950-1, UL94-V0; designed to meet: UL60950-1, CSA 22.2 No. 60950-1 - EMC: compliant to EN55022 Class B, EN55024, EN61000-6-1/ -2/ -3 /-4, EN50121-3-2 (Railway); designed to meet: FCC, VCCI, BSMI
GENERAL	DIMENSIONS WEIGHT MTBF POWER CONSUMPTION	3U / 4HP, 100 x 160 mm 280 g 936,253 h acc. to MIL-HDBK-217 FN2, Ground Benign, controlled at 30° C Typ. 11W with two 10 GbE links
ENVIRONMENTAL	OPERATING TEMPERATURE STORAGE TEMPERATURE CLIMATIC HUMIDITY	0° C to +60° C standard, -40° C to +85° C extended temperature -40° C to +85° C (without additional components) 93 % RH at 40° C, non-condensing (acc. to IEC 60068-2-78)

ORDERING INFORMATION

ARTICLE	DESCRIPTION
CPS3402	3U / 4HP dual 10GBASE-T Ethernet controller

Please contact your local sales representative for other configuration options.

CORPORATE OFFICES

EUROPE, MIDDLE EAST & AFRICA

Lise-Meitner-Str. 3-5
86156 Augsburg
Germany
Tel.: + 49 821 4086 0
Fax: + 49 821 4086 111
info@kontron.com

NORTH AMERICA

14118 Stowe Drive
Poway, CA 92064-7147
USA
Tel.: + 1 888 294 4558
Fax: + 1 858 677 0898
info@us.kontron.com

ASIA PACIFIC

1-2F, 10 Building, No. 8 Liangshuihe 2nd Street,
Economical & Technological Development Zone,
Beijing, 100176, P.R.China
Tel.: +86 10 63751188
Fax: +86 10 83682438
info@kontron.cn