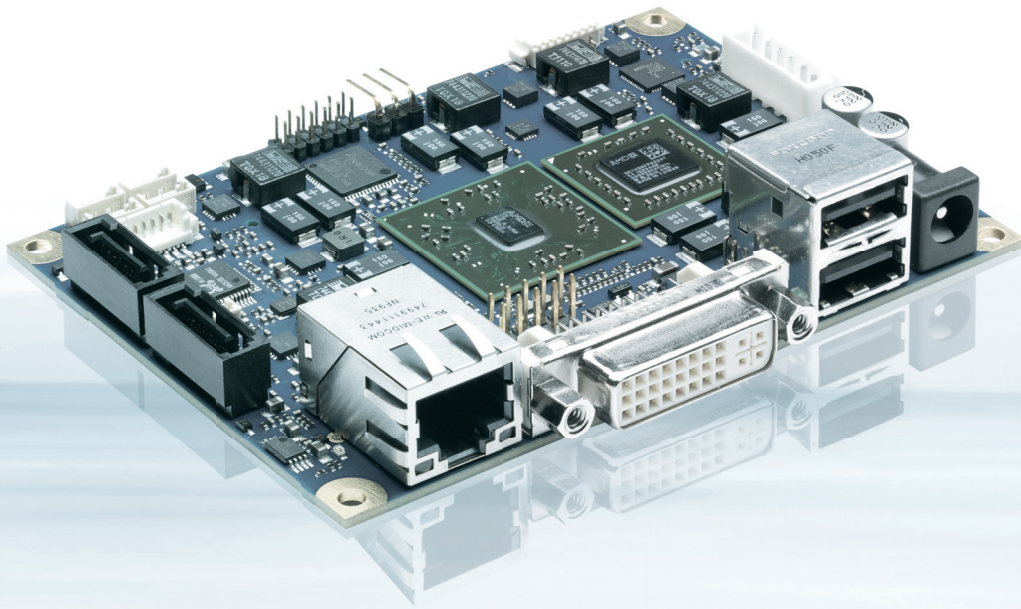


KTA55/pITX



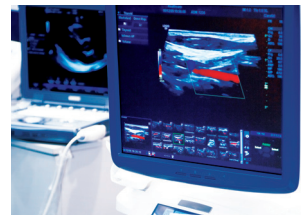
ULTRASMALL 2.5" SBC WITH AMD G-Series TECHNOLOGY

- ▶ superior DX11 graphics
- ▶ DVI-I & 24-bit LVDS
- ▶ 6x USB 2.0, 2x SATA, GBit Ethernet
- ▶ bootable micro SD card slot
- ▶ standard KT PICO-ITX cooling concept

POSSIBILITIES START HERE



KTA55/pITX



▶ TECHNICAL INFORMATION

PROCESSOR	1.0 GHz dual core T40N
CHIPSET	AMD A55E
MEMORY	Support for DDR3 unbuffered SODIMM Module up to 4 GByte
ETHERNET	Ethernet 10/100/1000 Mbit
GRAPHICS	DVI and VGA output on DVI-I connector, 2x 24 Bit LVDS, dual independent display support
USB	6x USB ports
MASS STORAGE	2x SATA connector incl. RAID-support Bootable Micro SD Card Slot
SPECIAL FEATURES	TPM 1.2 Backlight Output selectable 5V or 12V
I/O FEATURES	8 Configurable GPIO
TEMPERATURE	Operating 0° C - 60° C (32° F ~140° F)
POWER SUPPLY	5 V only power supply Internal & external power connector available NEW: Lockable DC Power Connector
DIMENSIONS	100 x 72 mm (Pico-ITX)

▶ ORDERING INFORMATION

ARTICLE	PART NO.	DESCRIPTION
KTA55/pITX	03003-0000-10-0	2.5" Pico-ITX SBC with AMD G-Series APU

RECOMMENDED MEMORY MODULES

	NEW SKU 04/16*	OLD SKU	SKU NAME**
	1060-2502	1054-3773	DDR3-1066 SODIMM 1 GByte
	1060-2508	1054-3777	DDR3-1066 SODIMM 2 GByte
	1060-2512	1054-3781	DDR3-1333 SODIMM 2 GByte
	1060-2518	1055-8136	DDR3-1333 SODIMM 2 GByte
	1060-2514	1054-3782	DDR3-1333 SODIMM 4 GByte
	1060-2506	1054-3776	DDR3-1600 SODIMM 1 GByte
	1060-2482	1051-5403	DDR3-1600 SODIMM 2 GByte
	1060-2484	1051-9057	DDR3-1600 SODIMM 4 GByte

*SKU changes were caused by administrative issues only, no hardware changes.
**Named are always the min. requirements, the shipped memory can fulfill a higher performance level.

▶ CORPORATE OFFICES

EUROPE, MIDDLE EAST & AFRICA

Lise-Meitner-Str. 3-5
86156 Augsburg
Germany
Tel.: + 49 821 4086 0
Fax: + 49 821 4086 111
info@kontron.com

NORTH AMERICA

14118 Stowe Drive
Poway, CA 92064-7147
USA
Tel.: + 1 888 294 4558
Fax: + 1 858 677 0898
info@us.kontron.com

ASIA PACIFIC

1-2F, 10 Building, No. 8 Liangshuihe 2nd Street,
Economical & Technological Development Zone,
Beijing, 100176, P.R.China
Tel.: +86 10 63751188
Fax: +86 10 83682438
info@kontron.cn